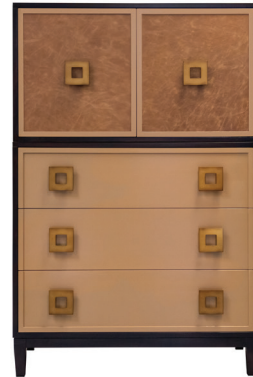


KINDEL
Grand Rapids

FACETS
October 2019





Index

Cabinet Options	4
Drawer and Door Combination Options	8
Base Options	10
Finish Options	12
Hardware Options	14
Hardware Placement Options	16
Table Base and Table Top Options	17
Headboard or Bed Options	18
Ordering Examples	20

FACETS

The Facets Collection includes the most comprehensive and wide-ranging chest, low-chest/nightstand, headboard, bar cabinet, and dining tables program available in the luxury furniture market. Kindel Grand Rapids brings the essence of what the company is known for – craftsmanship at the highest level and made in the USA – to a broader audience with this platform-based program.

The versatility of Facets allows you to choose from door, drawer chests or low-chests/nightstands, headboards, and dining tables in a wide range of sizes and then immerse yourself into an incredible array of luxury features including veneer, leather, finish, trim and overlay patterns. Multiple hardware choices are available including custom choices designed by Kindel Grand Rapids.

Cabinet Options

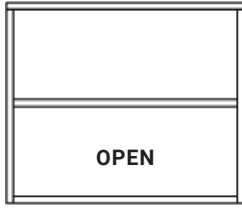
Please note: to create an overall height, you will need to add the cabinet height with the base height.

24"

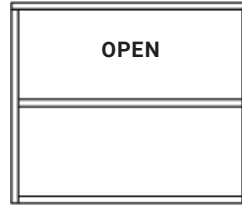
24"W, 18"D, 20 1/4"H



2 Drawer



Upper Drawer
Lower Shelf



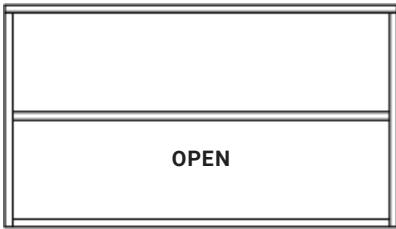
Upper Shelf
Lower Drawer



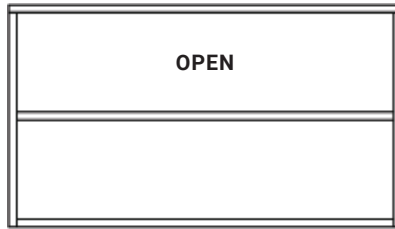
Single Door

36" Low

36"W, 18"D, 20 1/4"H



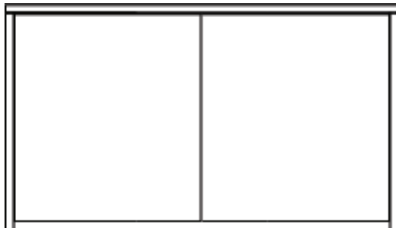
Upper Drawer, Lower Shelf



Upper Shelf, Lower Drawer



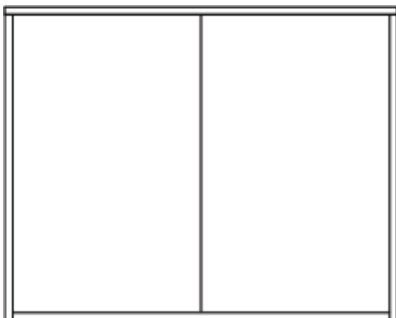
2 Drawer



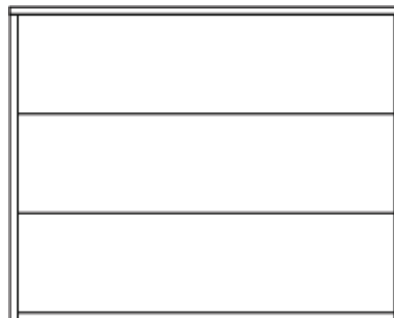
2 Door

36"

36"W, 18"D, 29"H



2 Door



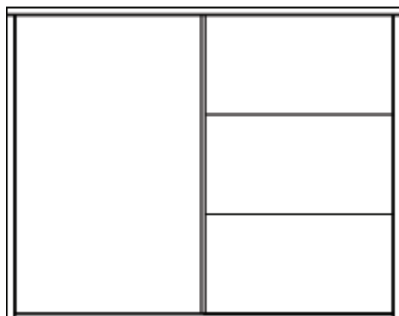
3 Drawer

Cabinet Options

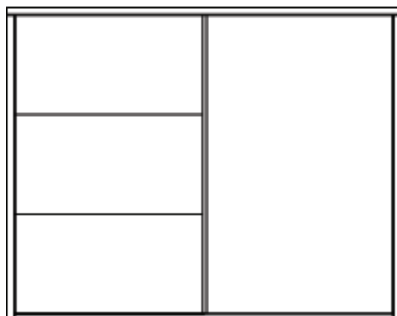
Please note: to create an overall height, you will need to add the cabinet height with the base height.

36"

36"W, 18"D, 29"H



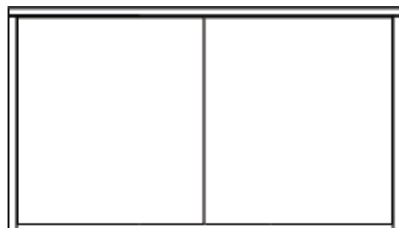
1 Door, 3 Drawer



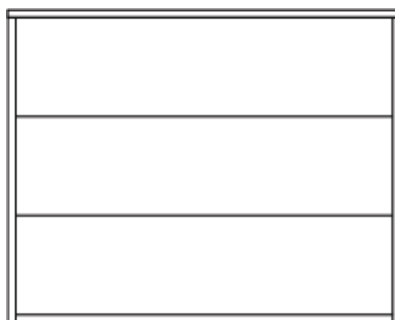
3 Drawer, 1 Door

36" Chest on Chest

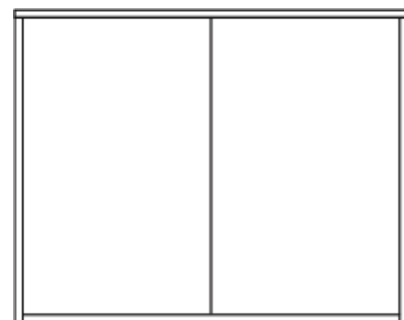
36"W, 18"D, 49"H



2 Door



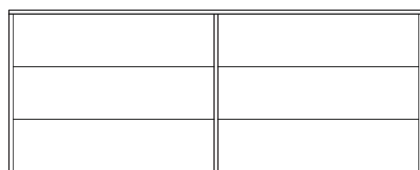
3 Drawer



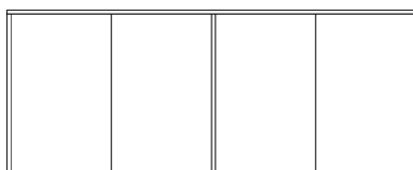
2 Door

72"

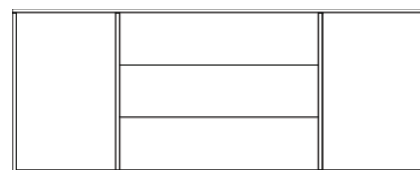
71 7/8"W, 18"D, 29"H



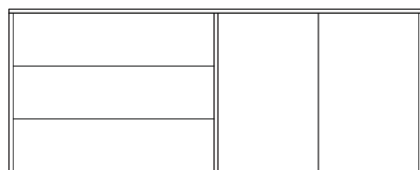
6 Drawer



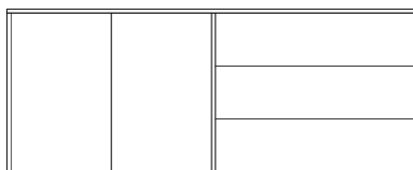
4 Door



Door, 3 Drawer Door



3 Drawer, 2 Door



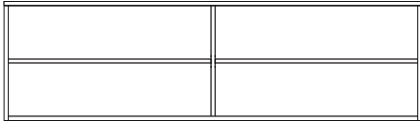
2 Door, 3 Drawer

Cabinet Option

Please note: to create an overall height, you will need to add the cabinet height with the base height.

72" Buffet

71 7/8"W, 18"D, 20 1/4"H



4 Drawer



4 Door



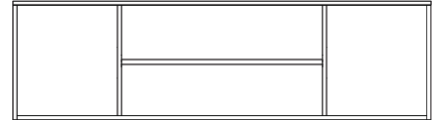
2 Drawer (10 1/2"H)



2 Drawer, 2 Door



2 Door, 2 Drawer



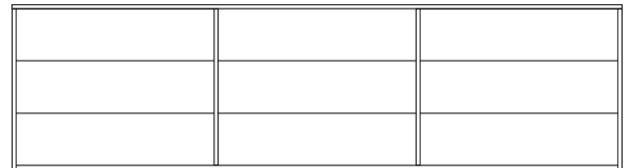
Door, 2 Drawer, Door

107"

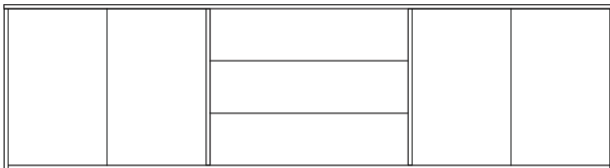
106 1/2"W, 18"D, 29"H



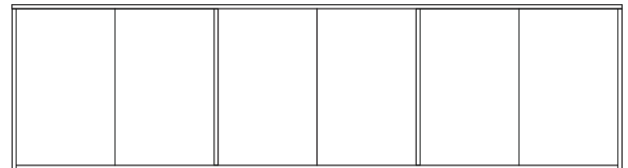
3 Drawer, 2 Door, 3 Drawer



9 Drawer



2 Door, 3 Drawer, 2 Door



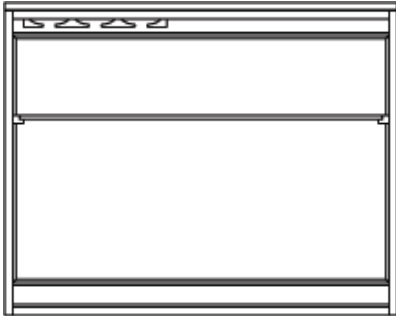
6 Door

Bar Cabinet Option

Please note: to create an overall height, you will need to add the cabinet height with the base height.

STANDARD

36"W, 18"D, 29"H



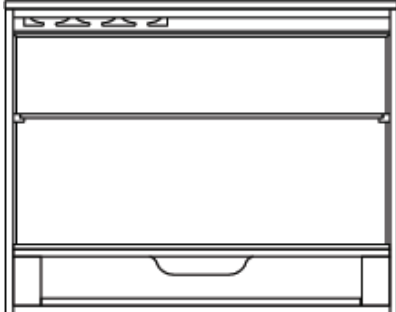
Adjustable Shelf
Height Options
from Bottom:

- 17 1/4"h
- 13 1/4"h
- 9 1/4"h

2 Door Bar Cabinet with

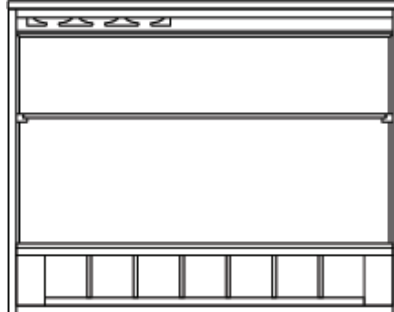
- adjustable glass shelf
- mirror back
- glass work surface
- stemware rack
- interior lighting

LUXURY



2 Door Bar Cabinet with

- adjustable glass shelf
- mirror back
- glass work surface
- stemware rack
- interior lighting
- tray drawer



2 Door Bar Cabinet with

- adjustable glass shelf
- mirror back
- glass work surface
- stemware rack
- interior lighting
- wine storage

Adjustable Shelf
Height Options
from Bottom:

- 17 1/4"h
- 13 1/4"h
- 9 1/4"h

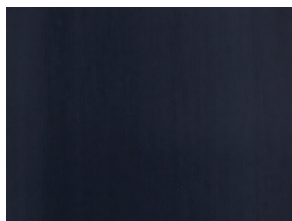
Top of Work Surface:

- 5 3/4"h

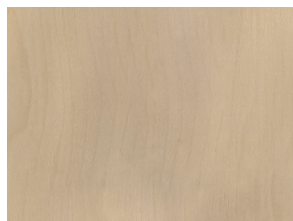
Drawer and Door Combination Options

STANDARD

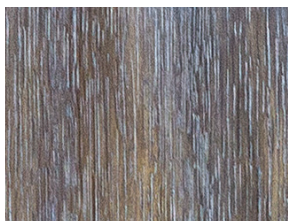
Door & Drawer Options



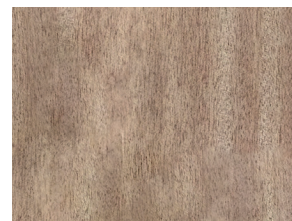
Maple, Painted



Maple, Stained



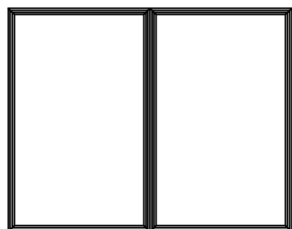
Oak (Frames not available)



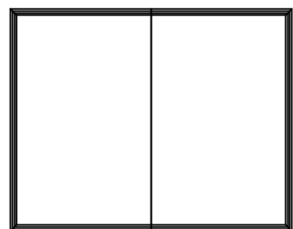
Ribbon Stripe Mahogany

LUXURY

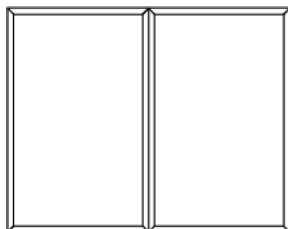
Door Options



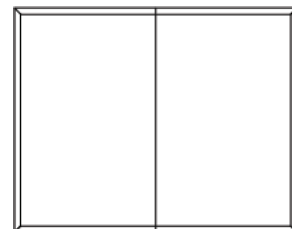
Beaded Door Frame
2 Door Leather/
Hair-on-Hide/Wallpaper



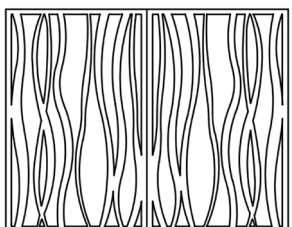
Beaded Perimeter Frame
2 Door (Maple only)



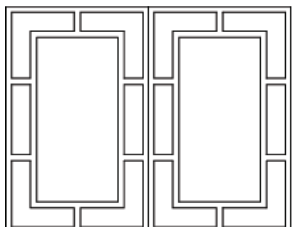
Flat Door Frame
2 Door Leather/
Hair-on-Hide/ Wallpaper



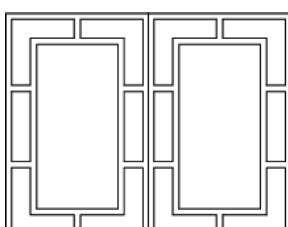
Flat Perimeter Frame
2 Door (Maple only)



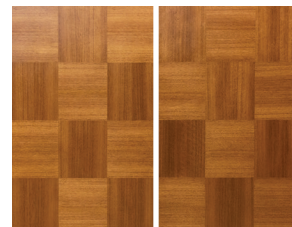
Seagrass Overlay
2 Door (Maple only)



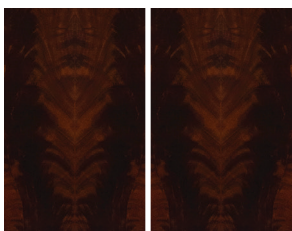
Fretwork Overlay
2 Door Leather/
Hair-on-Hide/ Wallpaper -
interior panel only



Fretwork Overlay
2 Door (Maple only)



Quartered Walnut, 2 Door
(Walnut Available on Doors
Only, Natural Finish. Frames not
Available)



Crotch Mahogany
2 Door



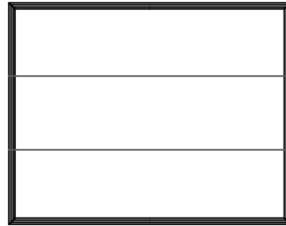
Wallpaper COM
2 Door (Frame Required)

LUXURY CONT.

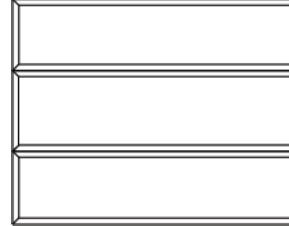
Drawer Options



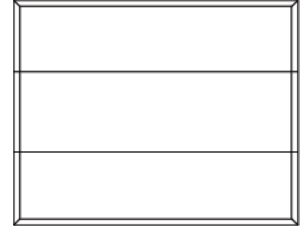
Beaded Drawer Frame
3 Drawer Leather/
Hair-on-Hide/Wallpaper



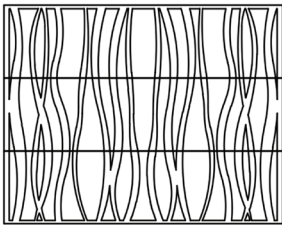
Beaded Perimeter Frame
3 Drawer (Maple only)



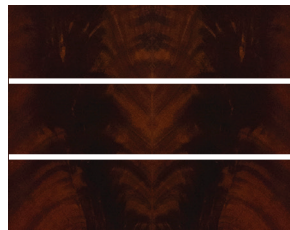
Flat Drawer Frame
3 Drawer Leather/
Hair-on-Hide/ Wallpaper



Flat Perimeter Frame
3 Drawer (Maple only)



Seagrass Overlay
3 Drawer (Maple only)

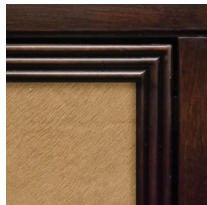


Crotch Mahogany
3 Drawer

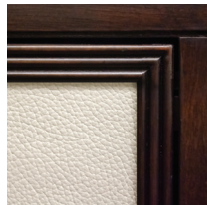


Wallpaper COM
3 Drawer (Frame Required)

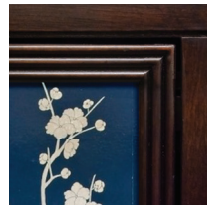
Material Option Preview



**Hair-on-Hide with
Beaded Frame**



**Leather with
Beaded Frame**



**Wallpaper with
Beaded Frame**



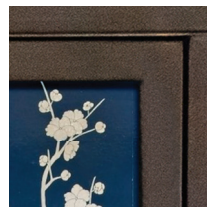
**Wood with
Beaded Frame**



**Hair-on-Hide with
Flat Frame**



**Leather with
Flat Frame**



**Wallpaper with
Flat Frame**



**Wood with
Flat Frame**



**Hair-on-Hide with
Beaded Frame and Nail
Trim (Doors Only)**

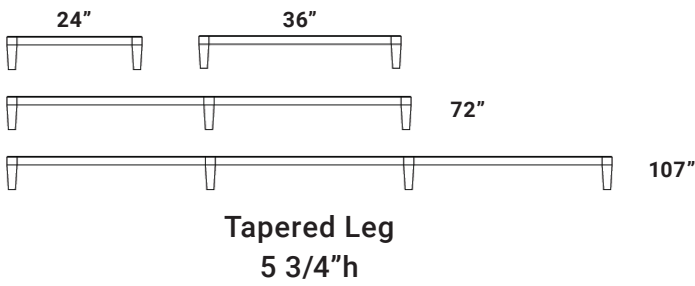
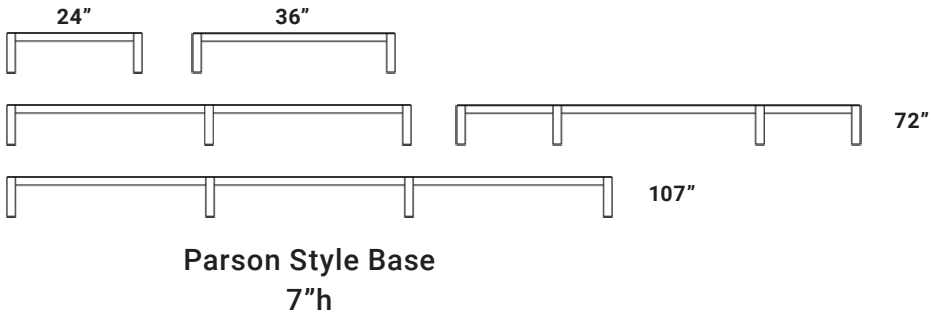
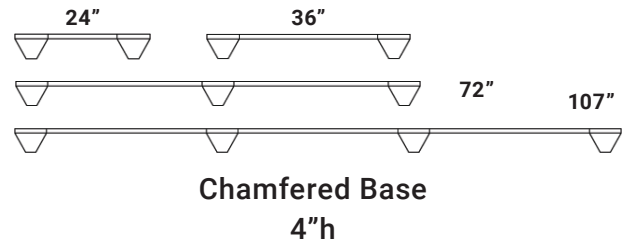
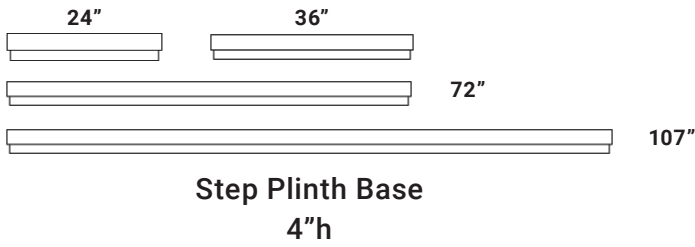


**Leather with Beaded
Frame and Nail Trim
(Doors Only)**

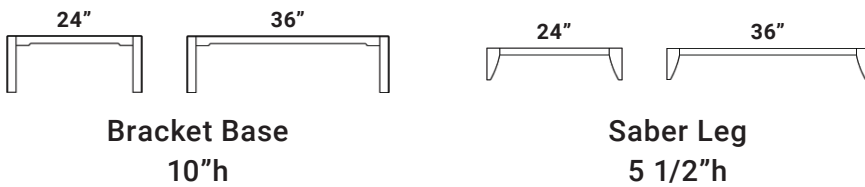
Base Options

Choose from twelve different options in either a 24", 36", 72" or 107" size.

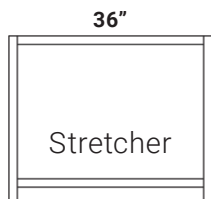
STANDARD



Available on 24" Nightstands and 36" Chests Only

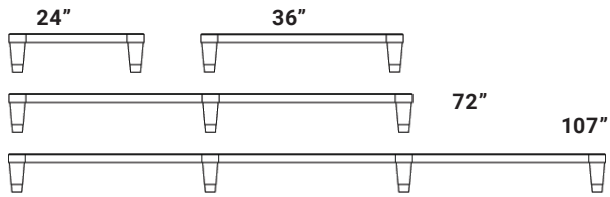


Available 36" Cabinet Only

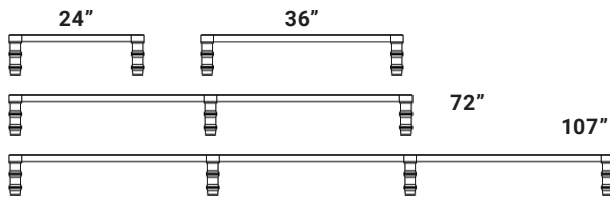


Bar Base with Stretcher
29 1/2" h

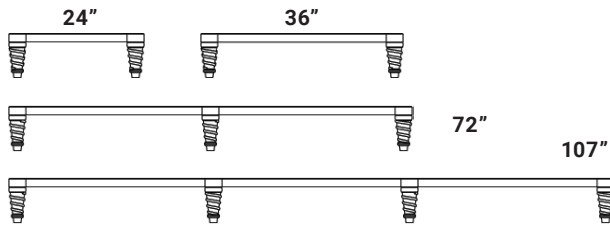
LUXURY



Tapered Leg with Ferrule
6 3/4" h



Faux Bamboo Leg
7" h



Twisted Leg
7 7/8" h



Tall Tapered Leg with Ferrule
20" h (Available on 72" Low Chests Only)

Available on 24" Nightstands and 36" Chests Only

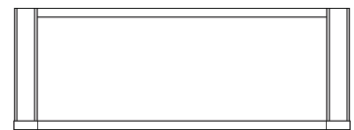


Greek Key
4 5/8" h



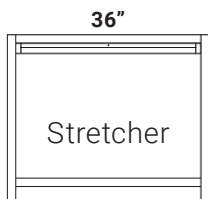
Plinth Base with Center Cut-Out
4 3/4" h

Available on 72" Low Chests Only



Stilt Base
19" h

Available 36" Cabinets Only



Bar Base with Pull-out Shelf and Stretcher
29 1/2" h



Tall Bar Base with Glass Shelf and Lower Fixed Wood Shelf
36" h



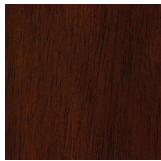
Tall Bar Base with Pull-out Shelf, Glass Shelf, and Lower Fixed Wood Shelf
36" h

Finish Options

Wood Finishes (Maple, Cherry or Mahogany)



19 - Americana



25 - Preservation



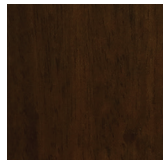
27 - Winterthur



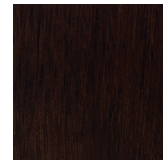
32 - Brighton



61 - Bark



62 - Grosse Pointe



63 - Dearborn



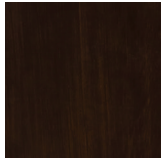
64 - Ebony Aged



390 - Aquarius



550 - Filbert



555 - Brier Smoke



557 - Lava
(Mahogany Only)



563 - Heron



571 - Sugarcane
(Mahogany Only)



740 - Avellino



742 - Portofino

Painted Lacquers (Maple or Cherry)



40 - Caramel



41 - Blush



42 - Braziliance



51 - Robin's
Egg Blue



52 - Putty



53 - Ice



54 - Cream



55 - Coral



56 - Ocean



57 - Citrus



58 - Orange



70 - White



71 - Bone



72 - Wisteria



73 - Indigo



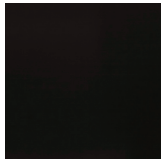
75 - Grey



77 - Silver Paint



79 - Gold Paint



80 - Black
Lacquer



81 - Lake
Michigan Blue



86 - Red Lacquer



181 - Black
Crackle



207 - Oyster



230 - Dusty
Bone



240 - Ivory Pearl



251 - Brushed
Robin's Egg Blue



252 - Brushed
Putty



253 - Brushed Ice



254 - Brushed
Cream



255 - Brushed
Coral



256 - Brushed
Ocean

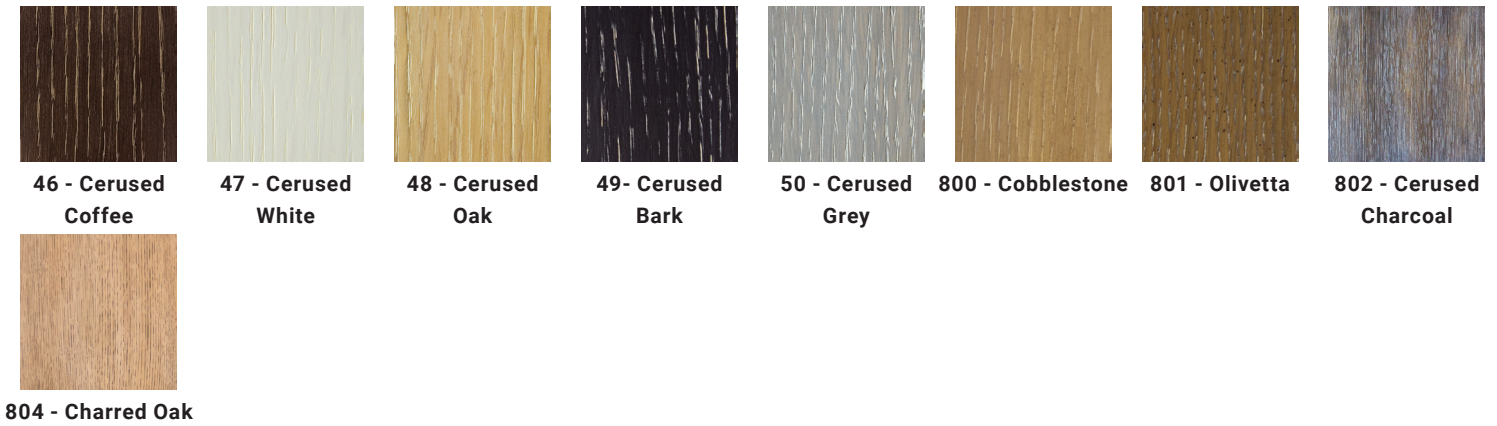


257 - Brushed
Citrus

Please note: For contrasting color on flat frame, specify if the frame matches the exterior cabinet, or the door/drawer finish.



Wood Finishes (Oak Drawer or Door Fronts Only, No frames available)



Leather & Hair-on-Hide



COM Wallpaper or Gracie Studio Wallpaper



Please note: Samples are representative for color only

Hardware Options

STANDARD

*Please Note: Hardware is sourced from various vendors. Finishes will vary. Call Customer Services for assistance.



Mosaic Rectangle:
Antique Brass, Nickel
6 3/8"w, 1"d, 1"h



Mosaic Square:
Antique Brass, Nickel
2"w, 2"d, 1"h



Marble Knob:
White Marble/Nickel,
Black Marble/Brass
1 1/4"D, 1 3/8"h



Greek Key:
Antique Brass, Nickel
5 3/8"w, 1 5/8"d, 3/4"h



Strie Pull:
Satin Brass
6"w, 3/4"d, 1"h



Acrylic Pearl Pull:
Satin Nickel
5 1/2"w, 3/4"d, 1 1/4"h



U-Turn Pull:
Brass, Nickel
4"w, 1"d, 5/8"h



Half Circle:
Nickel, Black
5 1/2"w, 2 3/4"d, 7/8"h



Oval Knob:
Polished Brass,
Polished Nickel, Bronze
1 3/4"w, 1"d, 7/8"h



Oval Ring:
Antique Nickel, Antique Brass
7"w, 4"d, 1"h



Slim Bar Pull:
Stainless Steel, Brushed Black Nickel, Vintage Bronze
12 1/2"w, 1/2"d, 1 1/4"h

LUXURY



Oval Strie:
Antique Brass, Satin Nickel
5"w, 3 3/4"d, 1 1/8"h



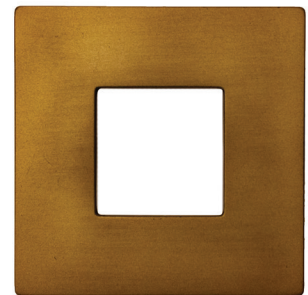
Textured Oval Ring:
Bronze
5 3/4"w, 2 1/2"d



Marble Pull:
Black Marble/Burnished Brass,
White Marble/Nickel
5"w, 1 3/8"h



Trim Nails (On Beaded Frames Only):
Nickel, French Natural, Brass
3/8" D



Modern Square:
Satin Nickel, Burnished Bronze, Black
(All finishes not shown)
3 1/2"w, 3 1/2"d, 1"h



Bubble Split (Doors Only):
Antique Brass, Antique Nickel
5"w, 2 1/2"d, 1"h



Bubble Square:
Antique Brass, Antique Nickel
3 7/8"w, 3 7/8"d, 1"h



**USB or Electric (only available on
24" and 36" Low Chest/ Nightstand):**
Black, Satin Nickel
1 3/4" D, 1/8"h



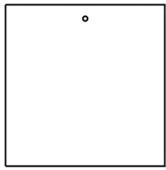
Modern Rectangle:
Satin Nickel, Burnished Bronze, Black
(All finishes not shown)
8 1/2"w, 2 1/8"d, 1"h



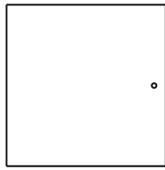
Flared Rectangle:
Satin Nickel, Burnished Bronze, Black
(All finishes not shown)
7 1/4"w, 2 1/8"d, 3/4"h

Hardware Placement Options

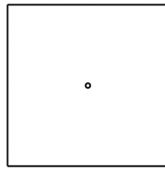
24" Door (specify left or right hinge) & Drawer



Top:
Horizontal



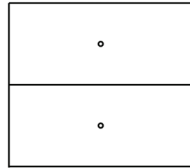
Inside (opposite hinge):
Vertical



Center:
Horizontal/ Vertical

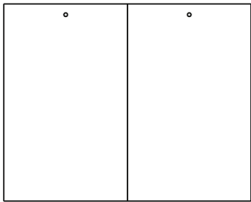


Double:
Horizontal

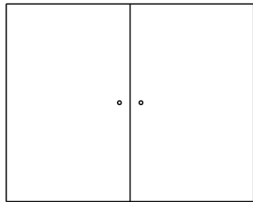


Single:
Horizontal

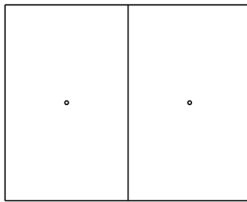
36" Door & Drawer



Top:
Horizontal



Inside:
Vertical



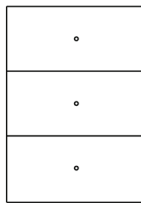
Center:
Horizontal/ Vertical



Double:
Horizontal



Single:
Vertical



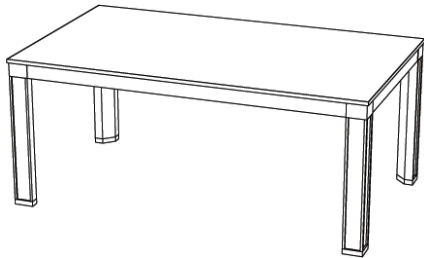
Single
(on Split Chest):
Horizontal/ Vertical

Note: For alternate placement or orientation please note on order and contact customer service for pricing if applicable.

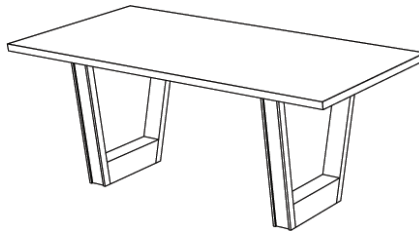
Table Base and Table Top Options

(Refer to page 12 – 13 for Finishes: Lacquers, Stains, and Veneers)

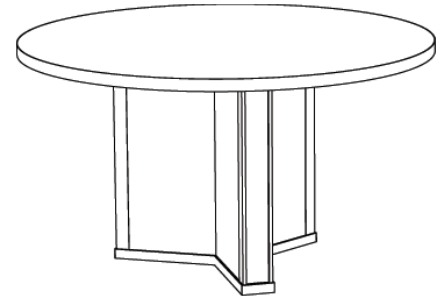
TABLE STYLES



Parson Style
42"W, 72"D, 30"H

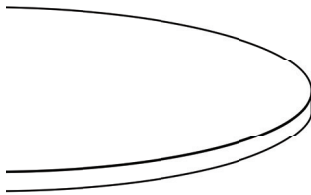


V-Base
42"W, 72"D, 30"H

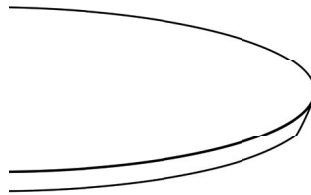


Tripod Base
54"D, 30"H

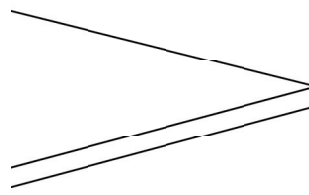
TOPS



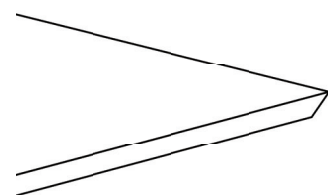
Round Straight Edge
54"D
(Only Available to Tripod)



Round Bevel
54"D
(Only Available to Tripod)

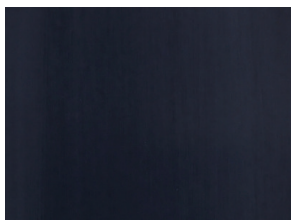


Rectangle Straight Edge
42"W, 72"D
(Available on Parson and V-Base)

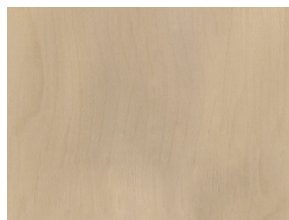


Rectangle Bevel
42"W, 72"D
(Only Available on V-Base)

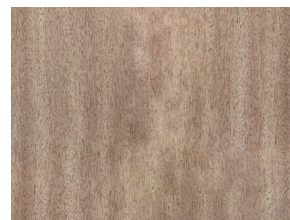
Table Top Options



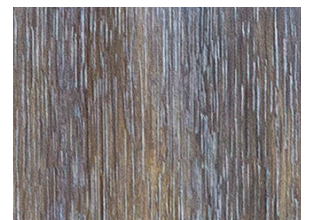
Cherry, Painted



Cherry, Stained



Ribbon Stripe Mahogany



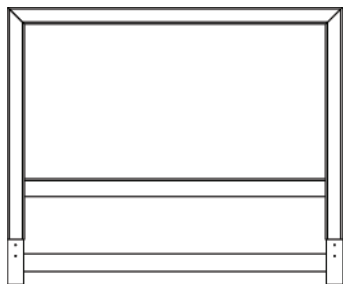
Oak

Headboard or Bed Options

Please note: Headboard is available with a metal bed frame.

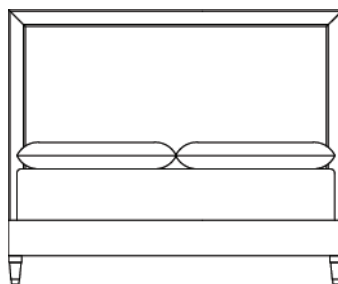
60"H

Headboard



Queen, California King, King
64"w, 76"w, 80"w (1 3/4"d)

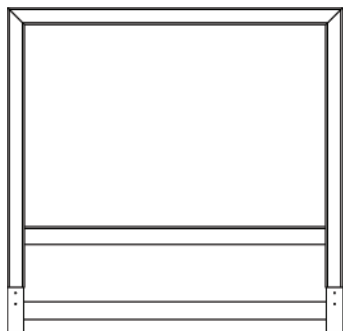
Bed



Queen, California King, King
64"w, 81 3/4"d; 76"w 85 3/4"d;
80"w, 81 3/4"d

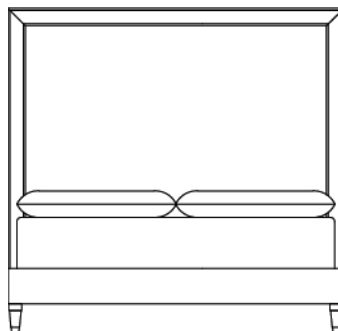
72"H

Headboard



Queen, California King, King
64"w, 76"w, 80"w (1 3/4"d)

Bed

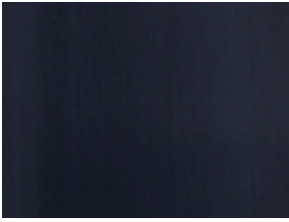


Queen, California King, King
64"w, 81 3/4"d; 76"w 85 3/4"d;
80"w, 81 3/4"d

Headboard Insert Panel Options

(Refer to page 12 – 13 for Finishes)

Inset Panel Options



Maple, Painted



Maple, Stained



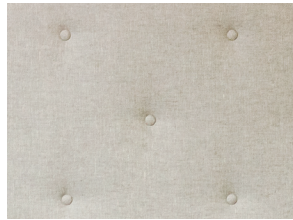
Oak



Ribbon Stripe Mahogany

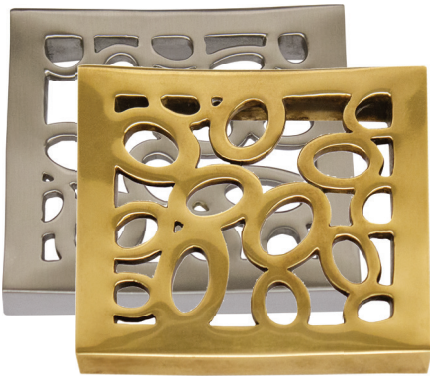


Upholstered



Upholstered
with Buttons

Decorative Accents



Bubble Square:
Antique Brass, Antique Nickel
3 7/8" w, 3 7/8" d, 1" h

Decorative Accent Placement



Top Corners Only

Ordering Examples



- 36" Facets Chest 2 Door**
- Cabinet Finished in 71-Bone
 - Doors in Quartered Walnut, Natural Finish
 - Oval Ring in Antique Brass, Center Placement
 - Saber Leg Base



- 72" Facets Credenza 3 Drawer, 2 Door**
- Cabinet Finished in 555-Brier Smoke
 - Drawers and Doors Finished in 32-Brighton with Beaded Frame
 - Mosaic Rectangle in Antique Brass, Center Placement and Oval Ring in Antique Brass, Center Placement
 - Twisted Leg Base



- 107" Facets Credenza 2 Door, 3 Drawer, 2 Door**
- Cabinet Finished in 55-Coral
 - Doors matching Cabinet with Flat Frame Finished in 76-Bone
 - Drawers matching Cabinet with Seagrass Overlay Finished in 76-Bone
 - Mosaic Rectangle in Nickel, Inside Placement
 - Mosaic Square in Nickel, Center Placement
 - Faux Bamboo Leg



24" Facets Low Chest/Nightstand

- Cabinet Finished in 73-Indigo
- Doors in Golden Denim Leather with Beaded Frame
- Oval Ring in Antique Brass, Center Placement
- Tapered Leg with Ferrule in Brass



**36" Facets Low Chest/Nightstand
Upper Drawer and Lower Shelf**

- Cabinet Finished in 52-Putty
- Drawer Finished in 61-Bark with Flat Frame (Matching Exterior Cabinet)
- Modern Rectangle in Satin Nickel, Center Placement
- Center Cut-Out Plinth Base



36" Facets Bar Cabinet

- Cabinet Finished in 375-Grey Striata
- Crotch Mahogany Doors in 25-Preservation
- Half Circle in Black, Inside Placement
- Bar Base with Pull-Out Shelf, Finished in 80-Black Lacquer



60"H Facets Headboard – Queen

- Headboard in 563-Heron
- Headboard Inset Upholstered with Buttons
- Bubble Square in Antique Nickel



72" Facets Low Credenza 4 Door

- Cabinet finished in Brighton, Satin
- Crotch Mahogany Doors
- Mosaic Square in Antique Brass
- Stilt Base



36" Facets Chest on Chest
2 Door, 3 Drawer

- Cabinet finished in Heron
- Door Frames, Drawers and Drawer Frames finished in Caramel
- Modern Square in Burnished Bronze, Center placement on doors, Double placement on drawers
- Chestnut Leather on Doors
- Maple with Flat Frame on Drawers
- Tapered Leg



72" Facets Dining Table

- Finished in Preservation, Satin
- Ribbon Stripe Mahogany veneer top
- Bevel Edge
- V-Base

36" Facets Chest 3 Drawer, 1 Door
Marble Knobs in White/Nickel, Center Placement on Drawers
Marble Pull in White/Nickel, Inside Placement on Door
Drawers and Door in Maple
Bracket Base



